

Supply/Demand Overview for 2011

(for Oils, Soybean and Soya Meal in Japan)

Food Manufacture and Commerce Div. MAFF

Yutaka Yoshida

Nov 17, 2011



Japanese Supply / Demand for Vegetable Oils

日本の植物油需給

(unit : 1,000MT)

	2007	2008	2009	2010	2011F	2011 ^(c) (Jan/Sep)
Demand	2,409	2,353	2,304	2,341	2,293	
Domestic Demand	2,399	2,345	2,290	2,330	2,283	
edible oils ^(a)	1,871	1,797	1,728	1,749	1,688	
tropical oils ^(b)	528	548	562	581	595	
Export	10	8	14	11	10	6 (95.0)
Supply	2,516	2,505	2,423	2,450	2,398	
Opening Stocks	125	107	154	119	109	66 ^(d) (90.8)
Production	1,730	1,703	1,599	1,656	1,604	1,215 (98.6)
soybean oil	576	542	477	468	410	299 (85.5)
rapeseed oil	942	951	929	993	994	758 (103.1)
other oils	212	211	193	196	200	158 (106.9)
Import	661	695	670	675	685	609 (103.2)
edible oils ^(a)	133	147	108	94	90	84 (116.8)
tropical oils ^(b)	528	548	562	581	595	526 (101.3)
Ending Stocks	107	154	119	109	105	82 ^(d) (102.9)

(a) edible oils : soybean oil, rapeseed oil, mustard oil, rice bran oil, cottonseed oil, safflower oil, sesame oil, corn oil, groundnut oil and sunflowerseed oil

(b) tropical oils : coconut(copra) oil, palm kernel oil and palm oil

(c) () : ratios to the same period in the previous year(%)

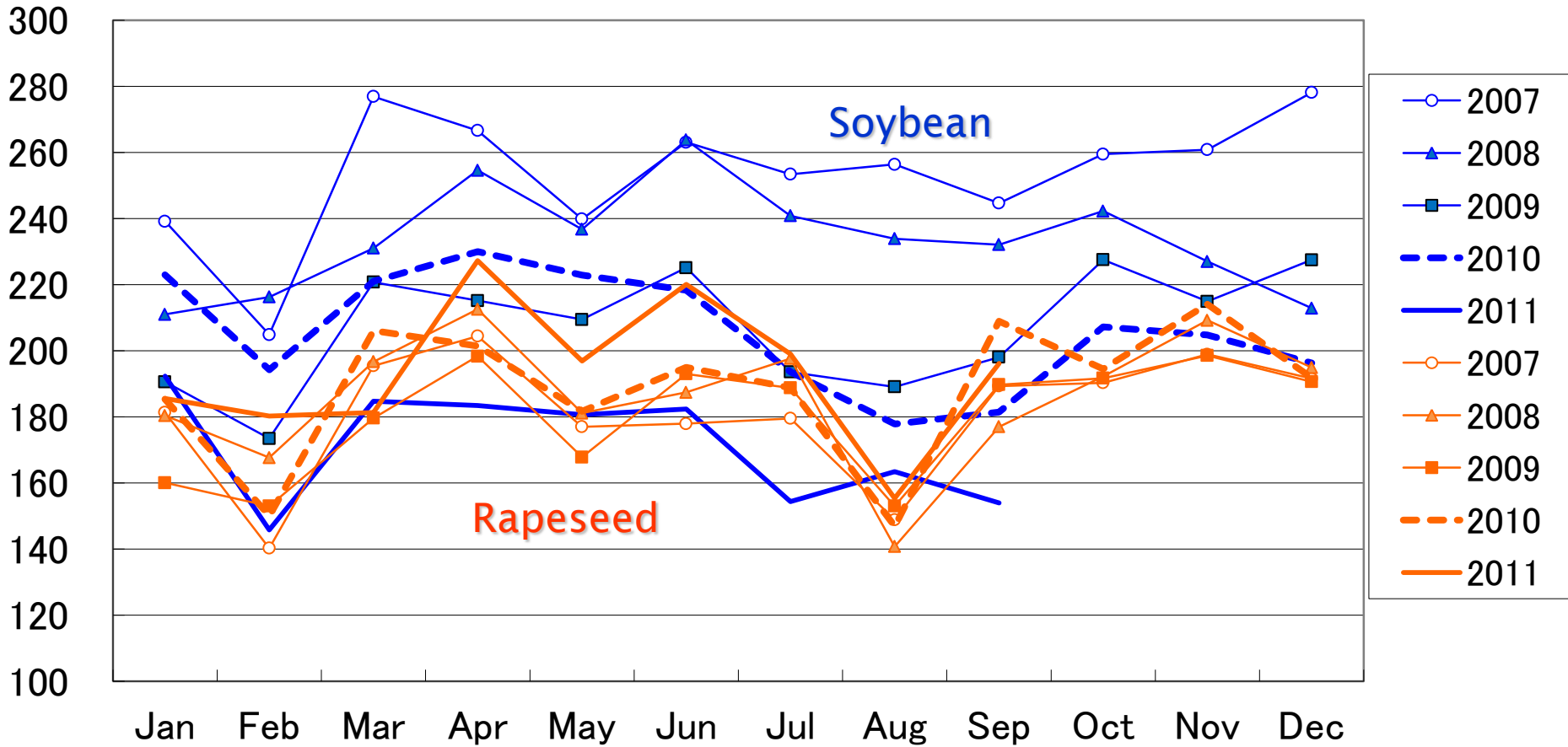
(d) stocks of crushers

Japanese Crashings of Soybean and Rapeseed

日本の大豆と菜種の搾油

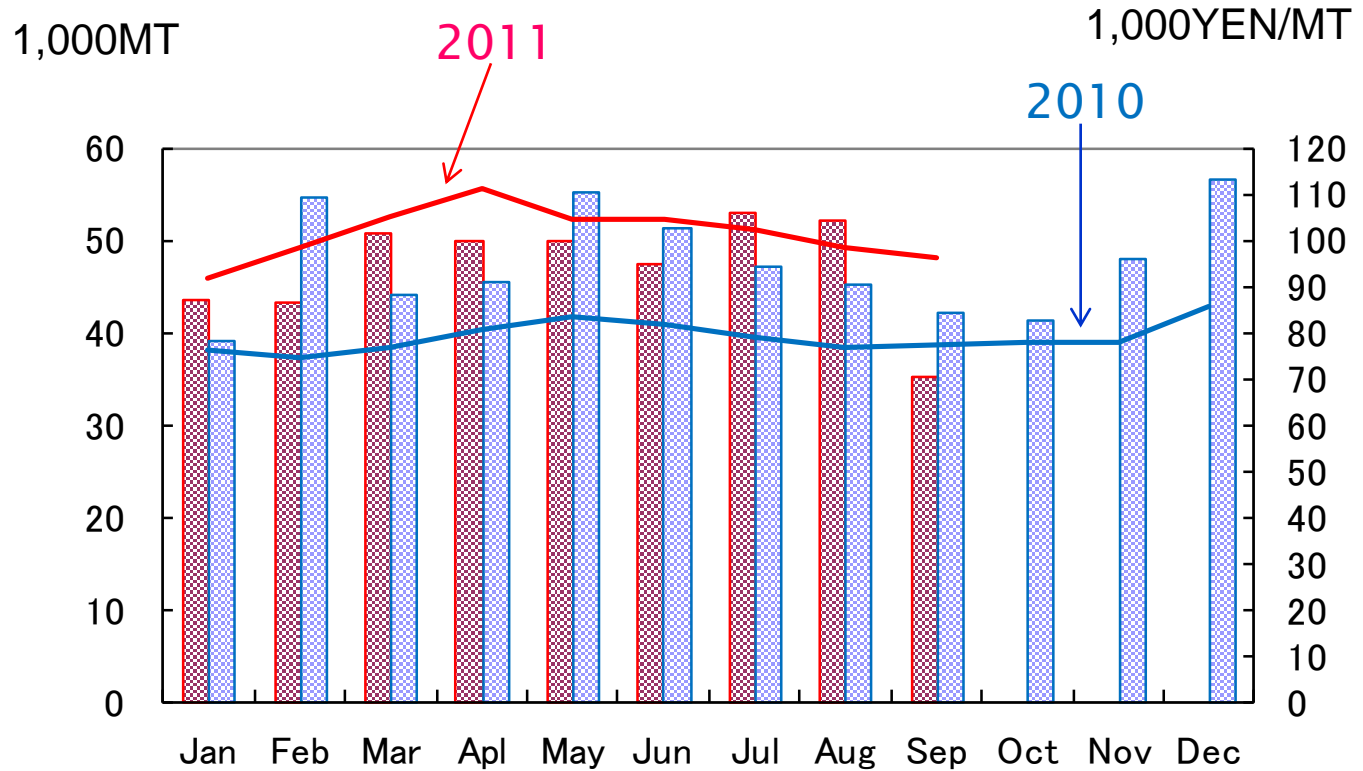
(2007-2011)

1,000 MT



Palm Oil Import

パーム油輸入



Quantity: Bar Graph, Price: Line Graph

Japanese Supply / Demand for Soybean

日本の大豆需給

(unit: 1,000MT)

	2007	2008	2009	2010	2011F	2011 ^(a) (Jan/Sep)
Demand	4,226	3,953	3,593	3,562	3,234	
Crushing	3,044	2,802	2,485	2,473	2,180	1,541 (82.6)
for Food	1,045	1,037	993	976	941	
for Feed	125	114	115	113	113	
Export	12	0	0	0	0	0 (13.6)
Supply	4,307	3,864	3,584	3,617	3,234	
Crop	229	227	262	230	223	
Import	4,161	3,711	3,390	3,456	3,070	2,110 (79.8)
USA	3,325	2,729	2,412	2,467		1,475 (77.2)
Canada	309	325	353	371		273 (92.0)
China	137	86	51	48		36 (89.6)
Brazil	367	568	570	568		323 (81.7)
Paraguay	0	1	1	2		2 (123.1)
Others	21	2	2	0		0 (349.6)
Loss	▲ 83	▲ 74	▲ 68	▲ 69	▲ 59	
Ending Stocks	250	179	223	234		164 ^(b) (73.0)

(a) () : ratios to the same period in the previous year(%)

(b) stocks of crushers

Japanese Supply / Demand for Soya Meal

日本の大豆ミール需給

(unit: 1,000MT)

	2007	2008	2009	2010	2011F	2011 ^(a) (Jan/Sep)
Demand	4,004	3,805	3,815	4,048	3,940	
for Feed	3,465	3,306	3,373	3,505	3,400	
for Others	539	499	442	543	540	
Export	0	0	0	0	0	0 (-)
Supply	4,121	3,936	3,926	4,165	4,017	
Opening Stocks	129	117	131	111	117	50 ^(b) (109.0)
Production	2,286	2,137	1,880	1,868	1,640	1,185 (84.4)
Import	1,706	1,682	1,915	2,186	2,260	1,631 (99.8)
Ending Stocks	117	131	111	117	77	68 ^(b) (134.3)

(a) (): ratios to the same period in the previous year (%)

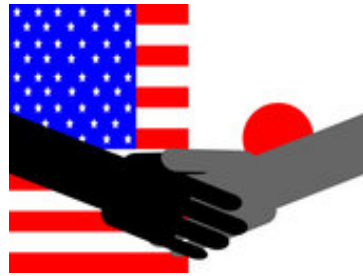
(b) stocks of crushers

Japanese Demand for Food Grade Soybean by Products

日本の食品大豆製品別需要

(unit: 1,000MT)

Year	Total	by Products								
		Soybean Curd (incl. Deep-Fried)	Fermented Soybeans	Fermented Soybean Paste	Soy Sauce	Dehydrated Soybean Curd	Soy Milk	Others		
								Cooked Soybeans	Soybean Flour	Others
2007	1,045	497	130	139	40	30	25	33	19	132
2008	1,037	496	129	137	39	29	25	33	19	130
2009	993	490	125	131	39	27	29	33	19	100
2010	976	480	123	127	39	26	32	33	19	97
2011F	941	460	120	121	39	25	32	31	18	95



Thank you