

Table 1. Soybean production data for the United States, 2007 crop

Region	State	Yield (MT / ha)	Area Harvested (1000 ha)	Production (M MT)
Western	Iowa	3.49	3,451	12.1
Corn Belt (ECB)	Kansas	2.28	1,013	2.3
	Minnesota	2.82	2,491	7.0
	Missouri	2.49	1,843	4.6
	Nebraska	3.49	1,519	5.3
	North Dakota	2.42	1,215	2.9
	South Dakota	2.75	1,276	3.5
	Western Corn Belt	2.82	12,806	38
				53.4%
Eastern	Illinois	2.96	3,321	9.8
Corn Belt (ECB)	Indiana	2.89	1,895	5.5
	Michigan	2.22	705	1.6
	Ohio	3.09	1,673	5.2
	Wisconsin	2.75	543	1.5
	Eastern Corn Belt	2.78	8,136	24
				33.3%
Midsouth (MDS)	Arkansas	2.55	1,126	2.9
	Kentucky	1.88	435	0.8
	Louisiana	2.69	239	0.6
	Mississippi	2.75	579	1.6
	Oklahoma	1.61	69	0.1
	Tennessee	1.55	401	0.6
	Texas	2.15	32	0.1
	Midsouth	2.17	2,882	7
				9.5%
Southeast (SE)	Alabama	1.48	71	0.1
	Florida	n/a	5	n/a
	Georgia	2.02	107	0.2
	North Carolina	1.34	555	0.7
	South Carolina	1.28	176	0.2
	Southeast	1.53	914	1
				1.8%
East Coast (EC)	Delaware	1.48	59	0.1
	Maryland	1.68	158	0.3
	New Jersey	1.75	32	0.1
	New York	2.55	82	0.2
	Pennsylvania	2.62	168	0.4
	Virginia	1.68	198	0.3
	East Coast	1.96	697	1
				2.0%
States		2.15	11	0.02
States				0.03%
USA 2007		2.78	25,441	70.8
USA 2006		2.89	30,175	87.3

Source: United States Department of Agriculture (October 12, 2007)

n/a = not available

Table 2. U.S. Soybean Export Council 2007 Soybean Quality Survey Protein and Oil Data.

Region	State	Number of Samples	Protein (%)*		Oil (%)*	
			Average	Std. dev.	Average	Std. dev.
Western Corn Belt (WCB)	Iowa	274	36.2	1.13	18.8	0.66
	Kansas	32	35.5	1.26	18.6	0.58
	Minnesota	302	34.2	1.19	18.9	0.72
	Missouri	90	35.7	1.47	18.7	0.82
	Nebraska	132	35.3	1.00	18.5	0.71
	North Dakota	58	33.5	1.22	18.1	0.76
	South Dakota	77	34.3	1.13	18.4	0.71
Averages†	Western Corn Belt	965	35.2	1.20	18.7	0.70
Ranges	Western Corn Belt		(30.2 - 40.1)		(16.2 - 20.8)	
Eastern Corn Belt (ECB)	Illinois	268	35.7	1.13	18.5	0.80
	Indiana	117	35.6	1.32	18.5	0.79
	Michigan	47	35.4	1.11	18.6	0.72
	Ohio	115	35.6	1.42	18.4	0.82
	Wisconsin	38	35.1	1.40	18.5	0.71
Averages†	Eastern Corn Belt	585	35.6	1.26	18.5	0.79
Ranges	Eastern Corn Belt		(31.3 - 39.5)		(14.8 - 20.5)	
Midsouth (MDS)	Arkansas	41	35.8	1.47	19.1	0.77
	Kentucky	11	35.1	1.61	18.9	0.94
	Louisiana	6	36.4	1.39	19.9	1.00
	Mississippi	30	36.0	1.23	19.4	0.98
	Oklahoma	0				
	Tennessee	9	35.9	1.97	19.3	1.14
	Texas	2	35.0	0.64	20.1	0.57
Averages†	Midsouth	99	35.8	1.44	19.3	0.88
Ranges	Midsouth		(32.0- 39.4)		(17.2 - 21.6)	
Southeast (SE)	Alabama	2	36.2	0.49	19.7	1.77
	Florida	0				
	Georgia	0				
	North Carolina	6	35.7	1.27	18.9	0.91
	South Carolina	0				
Averages†	Southeast	8	35.8	1.17	19.0	1.02
Ranges	Southeast		(33.6 - 37.2)		(18.0 - 20.9)	
East Coast (EC)	Delaware	3	35.2	0.70	19.8	1.01
	Maryland	7	35.2	1.57	18.8	0.90
	New Jersey	0				
	New York	4	36.1	0.73	18.3	0.61
	Pennsylvania	9	35.0	2.49	19.0	1.22
	Virginia	5	35.1	1.48	19.0	1.16
Averages†	East Coast	28	35.3	1.66	18.9	1.03
Ranges	East Coast		(29.7 - 38.2)		(17.1- 20.9)	
USA	Averages	1685	35.5	1.23	19.0	0.94
	Ranges		(29.7 - 40.1)		(14.8 - 21.6)	
	Average of 2007 Crop†		35.4	1.2	18.7	0.76
	US 1986-2007 avg.		35.3	1.5	18.7	0.9

* 13% moisture basis

† Regional and US average values weighted based on estimated production by state as estimated by USDA, October 12, 2007 Crop Production Report

Table 3. U.S. Soybean Export council 2007 Soybean Quality Survey Foreign Material and Seed Size Data.

Region	State	Number of Samples	Foreign Material (%)*		g 100 seeds ⁻¹ *	
			Average	Std. dev.	Average	Std. dev.
Western Corn Belt (WCB)	Iowa	274	0.29	0.0075	16.0	2.08
	Kansas	32	0.35	0.0041	14.4	1.60
	Minnesota	302	0.27	0.0163	16.3	2.00
	Missouri	90	0.53	0.0233	14.6	1.96
	Nebraska	132	0.26	0.0054	15.9	1.50
	North Dakota	58	0.16	0.0012	14.6	1.80
	South Dakota	77	0.40	0.0148	15.9	1.93
Averages† Ranges	Western Corn Belt Western Corn Belt	965	0.32 (0 -28.23)	0.0107	15.7 (9.7 - 39.2)	1.90
Eastern Corn Belt (ECB)	Illinois	268	0.38	0.0106	15.2	2.01
	Indiana	117	0.25	0.0027	16.1	1.98
	Michigan	47	0.24	0.0036	17.8	1.91
	Ohio	115	0.31	0.0032	16.2	1.75
	Wisconsin	38	0.36	0.0087	17.3	1.98
Averages† Ranges	Eastern Corn Belt Eastern Corn Belt	585	0.32 (0 -16.0)	0.0065	15.9 (7.7-24.0)	1.94
Midsouth (MDS)	Arkansas	41	0.55	0.0055	13.9	2.06
	Kentucky	11	0.51	0.0051	13.9	2.46
	Louisiana	6	0.45	0.0032	14.1	1.34
	Mississippi	30	1.50	0.0379	13.9	1.78
	Oklahoma	0				
	Tennessee	9	0.54	0.0044	12.3	1.38
	Texas	2	0.30	0.0035	15.0	1.80
Averages† Ranges	Midsouth Midsouth	99	0.76 (0 - 21.02)	0.0129	13.8 (8.1 - 18.0)	1.91
Southeast (SE)	Alabama	2	0.98	0.0037	14.6	1.44
	Florida	0				
	Georgia	0				
	North Carolina	6	1.17	0.0174	14.6	2.21
	South Carolina	0				
Averages† Ranges	Southeast Southeast	8	1.14 (0.04 - 4.55)	0.0157	14.6 (11.6 - 18.2)	2.12
East Coast (EC)	Delaware	3	0.10	0.0003	17.2	1.42
	Maryland	7	0.26	0.0018	16.4	2.72
	New Jersey	0				
	New York	4	0.06	0.0005	17.1	2.07
	Pennsylvania	9	0.15	0.0015	17.8	1.82
	Virginia	5	0.48	0.0088	16.2	0.40
Averages† Ranges	East Coast East Coast	28	0.24 (0 - 2.05)	0.0032	16.9 (12.5- 20.7)	1.66
USA	Averages	1685	0.51	0.0078	15.5	1.82
	Ranges		(0 - 28.23)		(7.7 - 39.2)	
	Average of 2007 Crop†		0.37	0.0095	15.6	1.91

* 13% moisture basis

† Regional and US average values weighted based on estimated production by state as estimated by USDA, October 12, 2007 Crop Production Report

Table 4. Carbohydrate Analysis of a Small Number of 2007 Soybean Quality Survey Samples.

Region	State	Number of Samples	Protein*	Oil*	Fiber*	Glucose	Sucrose	Raffinose	Stachyose
			Percent Average	Percent Average	Percent Average	mg / g	mg / g	mg / g	mg / g
Western Corn Belt (WCB)	Iowa	6	34.0	19.7	4.5	10.9	47.8	6.4	41.5
	Kansas	2	36.4	20.1	4.2	7.9	34.5	9.4	38.2
	Minnesota	4	33.0	20.1	4.3	8.9	55.4	5.3	40.8
	Missouri	3	34.9	19.0	5.1	6.6	36.7	7.5	32.8
	Nebraska	3	34.9	19.6	4.5	10.0	47.6	6.0	39.7
	North Dakota	2	32.6	19.0	4.9	4.4	64.0	7.1	34.5
	South Dakota	2	35.3	20.1	4.4	5.2	33.4	6.2	41.0
Averages	Western Corn Belt	22	34.4	19.7	4.6	7.7	45.6	6.8	38.4
Ranges	Western Corn Belt		(31.7 - 35.3)	(18.7 - 20.7)	(3.3 - 5.4)	(3.1 - 25.4)	(30.8 - 61.4)	(4.5 - 11.8)	(26.1 - 46.5)
Eastern Corn Belt (ECB)	Illinois	5	35.0	18.9	5.1	6.9	44.1	6.9	36.6
	Indiana	3	35.5	19.6	4.5	5.3	40.1	7.4	38.2
	Michigan	1	34.3	19.4	4.6	3.8	51.2	5.6	35.6
	Ohio	4	34.8	20.1	4.4	7.0	46.0	6.7	35.9
	Wisconsin	1	34.2	19.3	4.8	3.3	45.6	4.9	35.3
Averages	Eastern Corn Belt	14	34.8	19.5	4.7	5.3	45.4	6.3	36.3
Ranges	Eastern Corn Belt		(33.6 - 36.7)	(17.9 - 21.0)	(3.7 - 5.6)	(2.9 - 13.7)	(30.6 - 51.2)	(4.9 - 8.8)	(31.6 - 42.8)
Midsouth (MDS)	Arkansas	0							
	Kentucky	1	36.4	18.0	4.6	6.8	37.3	9.7	34.7
	Louisiana	1	34.4	19.3	4.9	9.6	28.1	10.5	35.2
	Mississippi	1	32.5	21.4	4.2	6.7	39.7	11.5	23.7
	Oklahoma	0							
	Tennessee	1	34.9	19.4	4.6	5.0	34.2	8.4	30.3
	Texas	0							
Averages	Midsouth	4	34.6	19.5	4.6	7.0	34.8	10.0	31.0
Ranges	Midsouth		(32.5 - 36.4)	(18.0 - 21.4)	(4.2 - 4.9)	(5.0 - 9.6)	(28.1 - 39.7)	(8.4 - 11.5)	(23.7 - 35.2)
Southeast (SE)	Alabama	1	36.9	21.4	4.3	19.8	31.8	7.4	32.9
	Florida	0							
	Georgia	0							
	North Carolina	0							
	South Carolina	0							
Averages	Southeast	1	36.9	21.4	4.3	19.8	31.8	7.4	32.9
Ranges	Southeast								
East Coast (EC)	Delaware	0							
	Maryland	0							
	New Jersey	0							
	New York	0							
	Pennsylvania	0							
	Virginia	0							
Averages	East Coast	0							
Ranges	East Coast								
USA	Averages	41	35.2	20.0	4.5	9.9	39.4	7.6	34.6
	Ranges		(31.7 - 35.3)	(17.9 - 20.7)	(3.3 - 5.6)	(2.9 - 25.4)	(28.1 - 61.4)	(4.5 - 11.8)	(23.7 - 46.5)
Average of 2007 Crop†			34.5	19.6	4.6	7.7	45.3	6.8	37.8

* 13% moisture basis

† US average values weighted based on estimated production by state as estimated by USDA, October 12, 2007 Crop Production Report

Table 5. Historical Summary of Yield and Quality Data for US Soybeans.

Year	Yield (kg ha ⁻¹)	Protein* (%)	Oil* (%)	Sum [†] (%)	Harvested (M ha)	Production (M MT)	Protein Std. Dev.	Oil Std. Dev.
1986	2237	35.8	18.5	54.3	23.6	52.9	1.39	0.70
1987	2278	35.5	19.1	54.6	23.2	52.8	1.59	0.71
1988	1814	35.1	19.3	54.4	23.2	42.2	1.50	0.83
1989	2170	35.2	18.7	53.9	24.1	52.4	1.51	0.82
1990	2291	35.4	19.2	54.6	22.9	52.5	1.22	0.66
1991	2298	35.5	18.7	54.1	23.5	54.0	1.38	0.86
1992	2526	35.6	17.3	52.8	23.6	59.6	1.38	0.97
1993	2190	35.7	18.0	53.8	23.2	50.9	1.24	0.87
1994	2782	35.4	18.2	53.6	24.6	68.6	1.36	0.93
1995	2372	35.5	18.2	53.6	24.9	59.2	1.39	0.86
1996	2526	35.6	17.9	53.5	25.7	64.9	1.25	0.87
1997	2614	34.6	18.5	53.0	28.0	73.2	1.51	0.96
1998	2614	36.1	19.1	55.3	28.5	74.6	1.50	0.81
1999	2452	34.6	18.6	53.2	29.4	72.1	1.88	1.05
2000	2553	36.2	18.7	54.9	29.6	75.6	1.68	0.94
2001	2647	35.0	19.0	54.0	30.0	79.6	1.95	1.07
2002	2486	35.4	19.4	54.8	29.1	72.2	1.58	0.93
2003	2284	35.7	18.7	54.3	29.4	67.2	1.71	1.19
2004	2822	35.1	18.6	53.7	30.0	84.6	1.47	0.90
2005	2889	34.9	19.4	54.3	28.9	83.4	1.46	0.87
2006‡	2876	34.5	19.2	53.7	30.2	86.9	1.64	1.01
2007‡	2782	35.4	18.7	53.9	25.4	70.8	1.24	0.76
Averages (1986-2007)	2477	35.3	18.7	54.0	26.4	65.9	1.49	0.89

Sources: United States Department of Agriculture
Iowa State University
University of Minnesota

*Protein and oil concentrations expressed on a 13% moisture basis

†Sum represents sum of protein and oil concentrations

‡ US average values weighted based on estimated production by state as estimated by USDA, October 12, 2007 Crop Production Report

Figure 1. Soybean, Corn, and Wheat in the US (planted ha)

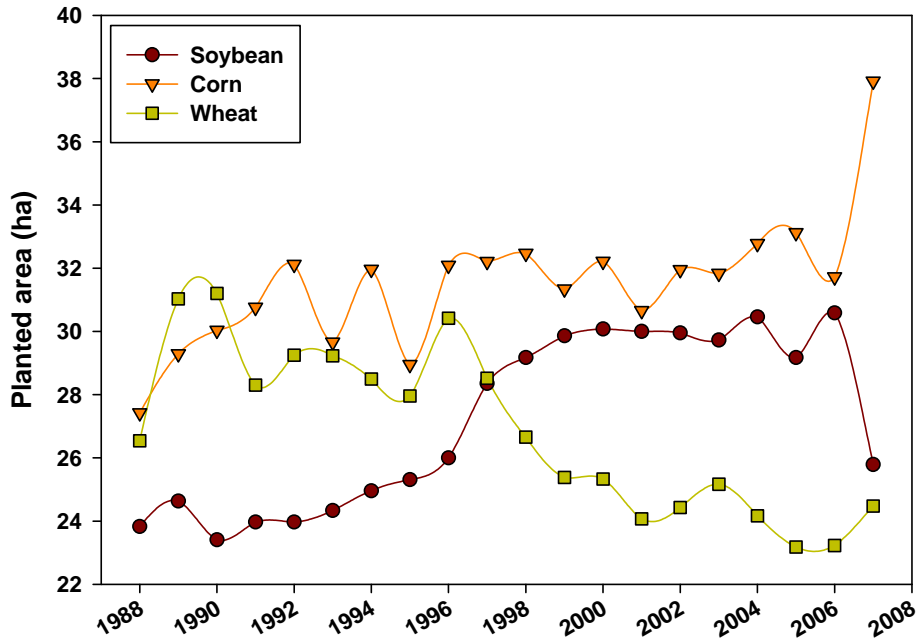


Figure 2. US Soybean Crop Conditions (2004-2007)

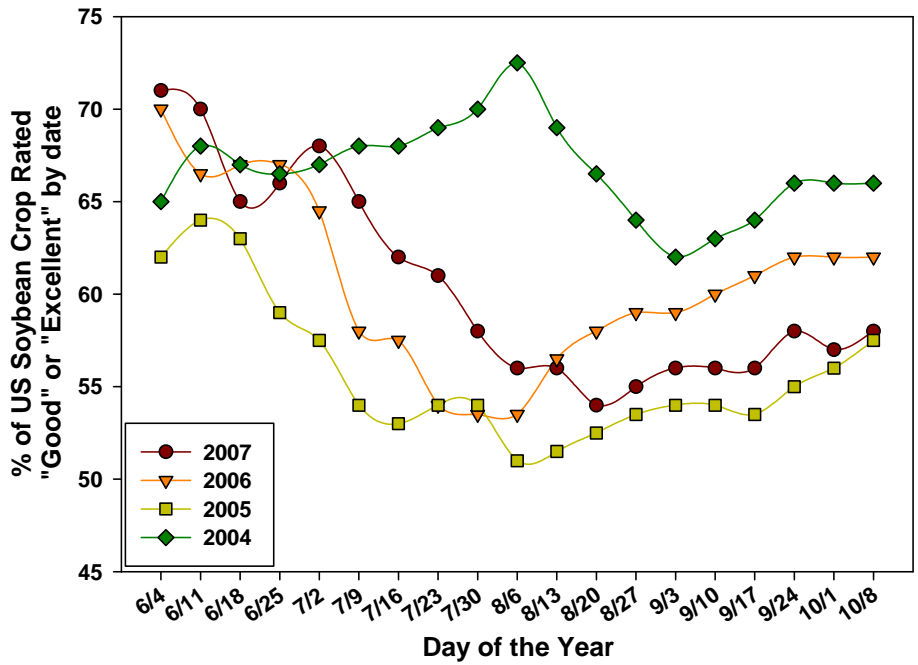


Figure 3. Average Protein and Oil values by state

